

5

# Stainless-steel enclosures



<b>Spacial S3X</b> Stainless-steel wall-mounting enclosures	5/8
<b>Dimensions</b>	5/11
<b>Selection guide</b>	5/12
<b>Spacial S3EX</b> for potentially explosive atmospheres	5/16



<b>Spacial SMX</b> Stainless-steel floor-standing monobloc enclosures	5/20
<b>Selection guide</b>	5/22
<b>Dimensions</b>	5/23
<b>Spacial SMX PC rack</b> to protect computer equipment	5/32



<b>Spacial SFX</b> Stainless-steel floor-standing suitable enclosures	5/24
<b>Selection guide</b>	5/26
<b>Dimensions</b>	5/27



<b>Spacial SDX</b> Stainless-steel floor-standing control desk	5/36
<b>Selection guide</b>	5/38
<b>Dimensions</b>	5/39

**Our stainless-steel solutions:**  
to withstand aggressions  
in exposed environments



## Spacial S3X - SMX - SFX - SDX

### Choice:

A complete range of enclosures.  
Plain door and glazed door.  
2 stainless-steel grades: 304L and 316L (according to the range).



### Resistance to corrosion:

High resistance to corrosion. 304L and 316L stainless steels provide the best solutions for applications in extremely demanding environments.



### Aesthetics:

Scotch-Brite® brushed finish as standard.  
Micro-beaded or painted finish (on request).  
Chrome-plated escutcheon.  
Invisible weld points.  
Perfect polishing.



### Customisation:

Machining and cut-outs.  
Special dimensions.  
Accessory installation.  
Special finishes: painted and micro-beaded.  
Production according to your specifications.



### Hygiene:

The high quality of the standard finish enables very easy maintenance while avoiding contamination.  
The hygienic feet made from 316L stainless steel, 100 mm and 200 mm high, make it easier to clean under the enclosures.



### Availability:

Wide range of dimensions for the wall-mounting enclosures, monobloc and suitable floor-standing enclosures and control desks.  
Accessory compatibility with our metal ranges.

## What is stainless steel?



### How is the stainless steel grade determined?

These enclosures have been specially designed for the chemical, oil and food and beverage industries, among others, which are particularly demanding in terms of hygiene and resistance to corrosion.

### Thanks to an elaborate composition

- The following table shows the percentages of the main alloy elements that make up stainless steels. The resistance of the material to aggressive agents in the environment depends mainly on these alloys.

Stainless-steel type		Chemical composition (%)			
AISI grade	N. Europe	carbon	chromium	nickel	molybdenum
304L	1.4307	< 0.03	17 - 19	8 - 10	0
316L	1.4404	< 0.03	17 - 19	10 - 13	2 - 2.25

### Choosing a stainless steel grade



#### AISI 304L stainless steel (known as food and beverage stainless steel)

The most commonly used type in the food and beverage industry for its resistance to corrosion and easy cleaning.

- Prevention against corrosion, especially in the presence of organic acids.
- Resistance to the action of nitrous gas in the presence of condensation water and in most aggressive environments.



#### AISI 316L stainless steel (known as marine stainless steel)

Recommended in salty or chlorinated environments due to its very high resistance to corrosion thanks to the presence of molybdenum.

- Improved resistance to corrosion.
- Particularly well adapted to environments charged with acidity, bromine and saline halides or which use very corrosive additives and solvents.

## The finish: 3 solutions against aggressive environmental agents

Surface condition plays an important role in the fight against bacteria. The lower the roughness, the fewer bacteria become incrustated. Reduced roughness means fewer bacteria, less adherence of materials and an impeccable finish.

To choose a finish is also to choose an appearance of the enclosures that matches the environment of other machines and equipment.



### Solution 1: Scotch-Brite® brushing

The method used consists of brushing as defined by the ASTM (American Society for Testing and Material).

- Finish very commonly used for the chemical and food and beverage industries.
- Surface roughness is improved thanks to an additional polishing process which offers more efficient characteristics against polluting elements.
- Surface roughness,  $Ra \leq 0.8 \mu m$ .



### Solution 2: Micro-beading (on request)

Exclusiveness, an impeccable finish with smooth silky appearance.

#### The method:

- Bombardment with miniscule ceramic balls of the entire surface to be treated at very high speed.
- Closes micro-cracks caused during lamination by flattening.

#### The result:

- Increased hardness.
- Reduced surface roughness ( $Ra \approx 0.8 \mu m$ ).
- A perfectly even surface, with a silky appearance (no scratches and no burrs).
- Reduces the adherence of materials.
- Allows disinfection.

Typical application: pharmaceutical and food and beverage industries.



### Solution 3: Protective painting (on request)

The highest protection against aggressions, external pollution and projections of metal particles.

- Provides the ultimate protection against corrosion.

Typical applications: marine, seaside, off-shore.

## Customised offer

**Configured or Specific:** two solutions customised according to your needs.



Configured

**Configured:**

- Standard dimensions and finishes.
- Machining.
- Standard accessory installation.



Specific

**Specific:**

- Special dimensions.
- Finishes.
- Cut-outs.
- Accessory installation.

### Customisation

To optimise your installations, we place all our production flexibility and the high quality of our manufacturing processes at your entire disposal. We supply a wall-mounting enclosure "ready for cabling".

- A perfect finish.
- Optimum operation.
- Saves installation time.
- Adapts to any installation conditions.
- Machining and cut-outs.

Machining stainless steel can be a delicate operation if not performed using the proper tools. We take care of this and perform it industrially.

The solution contributes to a perfect finish:

- No burrs, no roughness on the edge of the cut-outs.
- Guaranteed machining tolerances.
- External surfaces with no scratches.

- Special characteristics.

It is possible to manufacture enclosures with special dimensions, steels and paint.

### Other options

- Transparent door.
- Removable cable-gland plate.
- Compartmentalisation.
- Adjustable stainless-steel feet, H = 100 or 200 mm.
- Stamped ventilation louvres.
- Consult your sales agent to discover all our other configuration options.

### Examples

#### Suitable enclosures assembled with built-in control desk

- Suitable enclosures made from 304L stainless steel. Micro-beaded with built-in work console, sliding shelves and inner mounting plates.
- Installed on plinth, H = 100 mm.

#### Strengths

- Meticulous aesthetics.
- Impeccable surface condition.
- Easy disinfection.





## Monobloc stainless-steel control desk

- Control desk made from micro-beaded 304L stainless steel with monobloc console and desk top, recessed front and rear panels and equipped with inner mounting plates.
- Dimensions:
  - Height: 1200 mm.
  - Width: 2200 mm.
  - Depth: 1060 mm.

### Strengths

- Large monobloc control desk.
- Meticulous aesthetics.
- Impeccable surface condition (micro-beading).
- Easy disinfection.



## Suited 19" rack and PC rack for pharmaceutical process

- 19" rack and PC rack made from micro-beaded 304L stainless steel with electropolished fronts.
- Equipped with hygienic feet, H = 100 mm.

### Strengths

- Meticulous aesthetics.
- Impeccable surface condition (electropolishing).
- Easy disinfection.



## Stainless-steel lighting enclosures

- Large enclosures, W = 3000 mm, made from micro-beaded 316L stainless steel, 2.0 mm, with tilted top and plinth. These enclosures are installed on bridge piers.

### Strengths

- Excellent seal.
- Meticulous aesthetics.



Specific



Configured

# Stainless-steel wall-mounting enclosures

5

Finishes

Convenience  
and time saving

Compatibility  
with the other  
ranges

Robustness  
and durability

Sealing



## Spacial S3X

### Finishes:

Two types of steel offered as standard: 304L and 316L, with Scotch-Brite® brushed finish.  
Painted in the RAL range or micro-beaded finish (on request).



### Large range of accessories:

Stainless-steel accessories: canopy, wall-fixing lugs.  
Accessories of the standard offer: mounting plate, inner door, modular chassis and step slides.  
Large selection of locks with 100% stainless-steel transformation.



### Sealing:

Protection rating of IP 66 (IEC 60529): complete protection against dust and water sprays.  
Polyurethane gasket.  
Gutter-shaped front profile.  
Three closure points for the double door.



### Robustness and durability:

Resistance to external mechanical impacts:  
IK 10: plain door,  
IK 08: glazed door.  
Door reinforcement frame or profile.  
Stainless-steel hinges.



### Convenience and time saving:

304 or 316L stainless-steel wall-fixing lugs.  
Vertical reinforcement perforated profiles, which make it easier to equip the door.  
Reversible door opening to 120°.  
Easy installation directly on the machine thanks to the 4 rear drill holes.



# 304L / 316L stainless-steel wall-mounting enclosure

## Introduction



### Technical features

These enclosures have been specially designed for the chemical, oil and food and beverage industries, among others, which are particularly demanding in terms of hygiene and resistance to corrosion.

- Two types of materials, with Scotch-Brite® brushed finish, are available:
  - AISI 304L,
  - AISI 316L.
- Two wall-mounting enclosure versions are available:
  - With plain door,
  - With glazed door, Securit® glass, 4 mm thick.
- Protection rating of IP 66 for all single enclosures with single door and glazed door, IP 55 for the double door enclosures, according to IEC 60529.
- Resistance to external mechanical impacts:
  - IK 10 for the solid-door enclosures,
  - IK 08 for the glazed-door enclosures.
- Thickness: 1.5 mm.
- Single-piece body (cross-shaped structure). Gutter-shaped front profile.
- 4 rear studs for fixing the material.
- 2 cut-out vertical profiles on the door (from a height of 600 mm), with drill holes with a diameter of 4.25 mm and a pitch of 25 mm for installing accessories.
- Door strengthening frame (from a height of 1000 mm), cross-section of 20 mm × 15 mm, with drill holes with a diameter of 5 mm and a pitch of 25 mm.
- Standard lock with 3-mm double-bar lock (chrome-plated zamak).
- 2 locking points for heights of more than 500 mm or three points for two-door enclosures.
- Stainless-steel hinges screwed to the body of the enclosure. They make it easier to remove and invert the door. Opening angle: 120°.
- Polyurethane gasket.
- M6 × 16 screws on the door and on the body, allowing equipotential connection between the earth connections (on request).
- 4 holes for fixing to the wall directly or with the help of mounting lugs (on request), blocked by sealing plugs.

### Certifications

- IEC 62208.
- UL 508A.
- CAN/CSA 22.

# Stainless-steel wall-mounting enclosures

## Dimensions

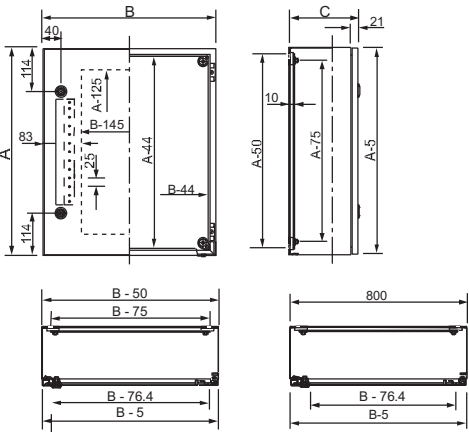


FIG. 2

External dimensions (mm)			Fig.
A	B	C	
300	200	150	1
300	250	150	1
300	300	150	1
400	300	150	1
400	300	200	1
400	400	200	1
400	600	200	1
500	400	200	2*
600	400	200	2
600	600	250	2
700	500	250	2
800	600	250	2
800	800	300	2
1000	800	300	3
1000	1000	300	4
1200	800	300	3
1200	1000	300	4

\*Without door reinforcement.

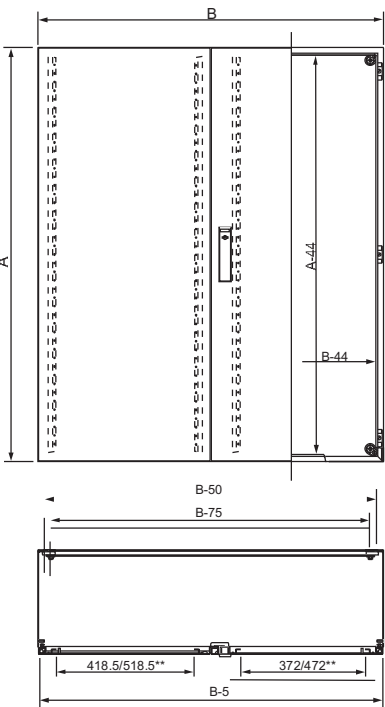


FIG. 4

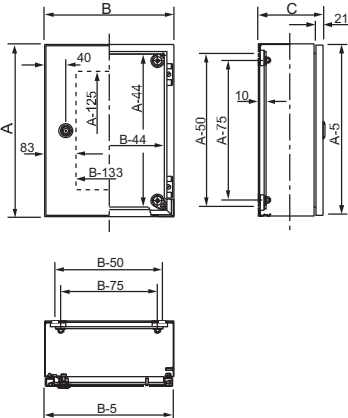


FIG. 1

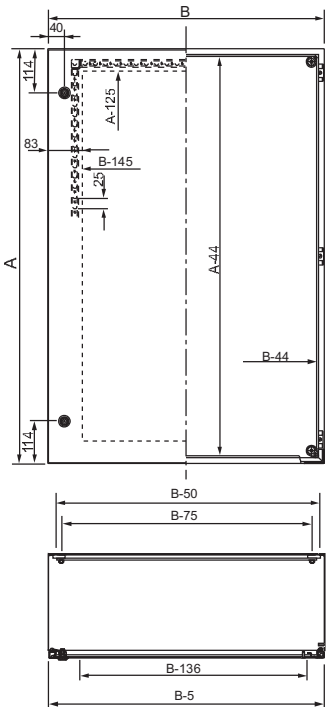


FIG. 3

\*\*For glazed door.

# Stainless-steel wall-mounting enclosures

## Selection guide






External dimensions (mm)			No. of locks	No. of doors	304L stainless steel		316L stainless steel	304L stainless-steel canopy	Plain mounting plate***
Height	Width	Depth			Plain door	Glazed door**	Plain door		
300	200	150	1	1	NSYS3X3215	-	NSYS3X3215H	NSYTX2015	NSYMM32
300	250	150	1	1	NSYS3X302515	-	NSYS3X302515H	NSYTX2515	NSYMM3025
300	300	150	1	1	NSYS3X3315	-	NSYS3X3315H	NSYTX3015	NSYMM33
400	300	150	1	1	NSYS3X4315	-	NSYS3X4315H	NSYTX3015	NSYMM43
400	300	200	1	1	NSYS3X4320	NSYS3X4320T	NSYS3X4320H	NSYTX3020	NSYMM43
400	400	200	1	1	NSYS3X4420	-	NSYS3X4420H	NSYTX4020	NSYMM44
400	600	200	1	1	NSYS3X4620	-	NSYS3X4620H	NSYTX6020	NSYMM46
500	400	200	2	1	NSYS3X5420	NSYS3X5420T	NSYS3X5420H	NSYTX4020	NSYMM54
600	400	200	2	1	NSYS3X6420	NSYS3X6420T	NSYS3X6420H	NSYTX4020	NSYMM64
600	600	250	2	1	NSYS3X6625	-	NSYS3X6625H	NSYTX6025	NSYMM66
700	500	250	2	1	NSYS3X7525	NSYS3X7525T	NSYS3X7525H	NSYTX5025	NSYMM75
800	600	250	2	1	NSYS3X8625	NSYS3X8625T	NSYS3X8625H	NSYTX6025	NSYMM86
800	800	300	2	1	NSYS3X8830	-	NSYS3X8830H	NSYTX8030	NSYMM88
1000	800	300	2	1	NSYS3X10830	NSYS3X10830T	NSYS3X10830H	NSYTX8030	NSYMM108
1000	1000	300	*	2	NSYS3X101030	-	NSYS3X101030H	NSYTX10030	NSYMM1010
1200	800	300	2	1	NSYS3X12830	-	NSYS3X12830H	NSYTX8030	NSYMM128
1200	1000	300	*	2	NSYS3X121030	-	NSYS3X121030H	NSYTX10030	NSYMM1210

\* Three-point closure system.

\*\* The glazed door has no reinforcement.

\*\*\* See other mounting plates in common accessoires.

5

Adhesive plastic document pocket	Door switch	Lighting
		
Page 7/130	Page 7/134	Page 7/126

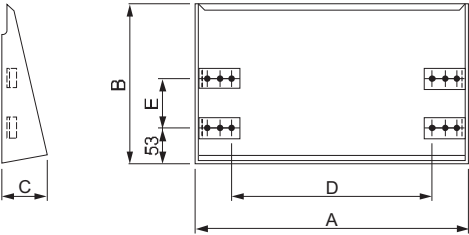


Configured

Optional in factory assembly:  
contact us.

Canopy

- Direct fixing to the body of the enclosure.
- 304L stainless-steel sheet, 1.5 mm thick, Scotch-Brite® brushed finish.
- Delivered with the fixings required for installation.
- Other finishes, other stainless steels: contact us.



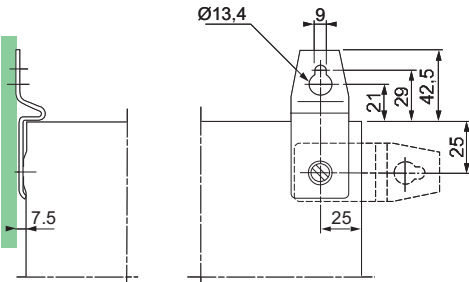
For wall-mounting enclosures (mm)		Dimensions (mm)					Canopy reference
Width	Depth	A	B	C	D	E	
200	150	205	183	51	120	-	NSYTX2015
250	150	205	183	51	120	-	NSYTX2515
300	150	305	183	51	220	-	NSYTX3015
300	200	305	233	51	220	70	NSYTX3020
400	200	405	233	70	320	70	NSYTX4020
500	250	505	283	70	420	120	NSYTX5025
600	200	605	233	70	520	70	NSYTX6020
600	250	605	283	70	520	120	NSYTX6025
800	300	805	333	70	720	170	NSYTX8030
1000	300	1005	333	70	920	170	NSYTX10030



Wall-fixing lugs

- Set of four 304 or 316L stainless-steel wall-fixing lugs.
- Mounting of the wall-fixing lugs in horizontal or vertical position.
- Fixing from the outside.
- Maximum load: horizontal 180 kg and vertical 350 kg.

Stainless-steel type	Reference
304	NSYPFCX
316L	NSYPFC2X



# Composition accessories

## Locking system

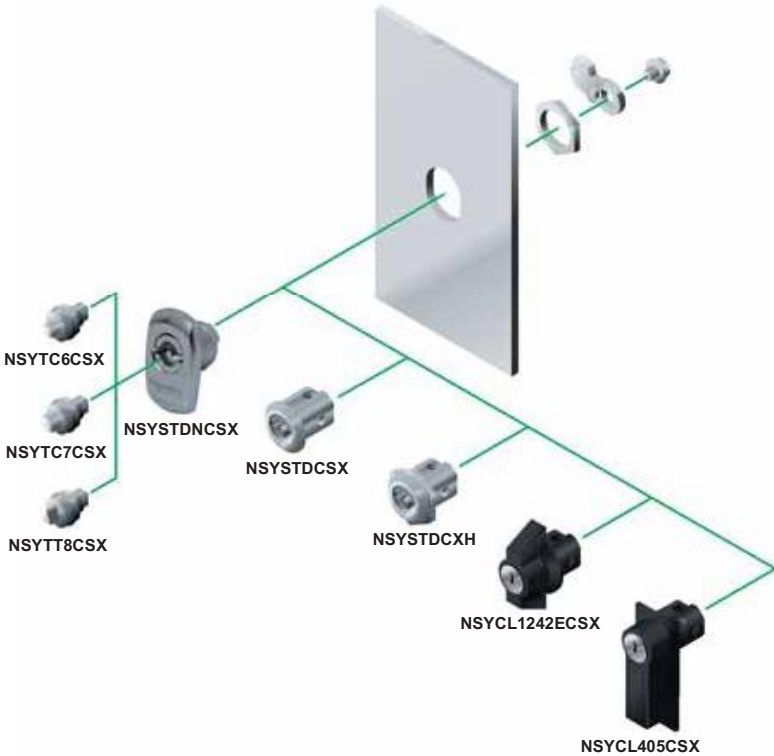
### Escutcheon

- Wall-mounting enclosure supplied with 3-mm double-bar chrome-plated zamak lock.
- Protection rating: IP 66.

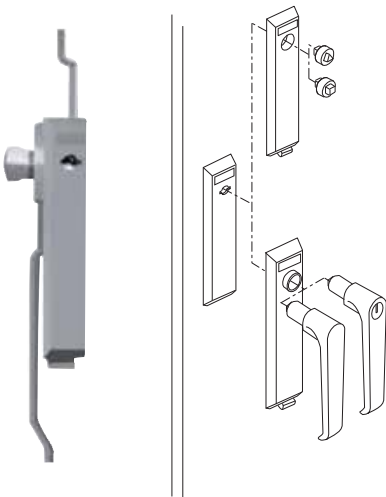
**Standard escutcheon**  
3-mm double-bar lock (standard - chrome-plated zamak)



NSYSTDNC SX



5



For the closures of double-door enclosures, contact us.

Description	Material	Reference
Standard 3-mm double-bar lock	chrome-plated zamak	NSYSTDNC SX
Round 3-mm double-bar lock (spare)	chrome-plated zamak	NSYSTDC SX
Round 3-mm double-bar lock	100 % stainless steel	NSYSTDCXH
8-mm triangular insert	100 % stainless steel	NSYT8CSX
7-mm square insert	100 % stainless steel	NSYT7CSX
6-mm square insert	100 % stainless steel	NSYT6CSX
1242E handle lock	Chrome-plated	NSYCL1242EC SX
405 handle lock	Polyamide	NSYCL405CSX



Configured

**Optional in-factory assembly:**  
contact us.



Inner door

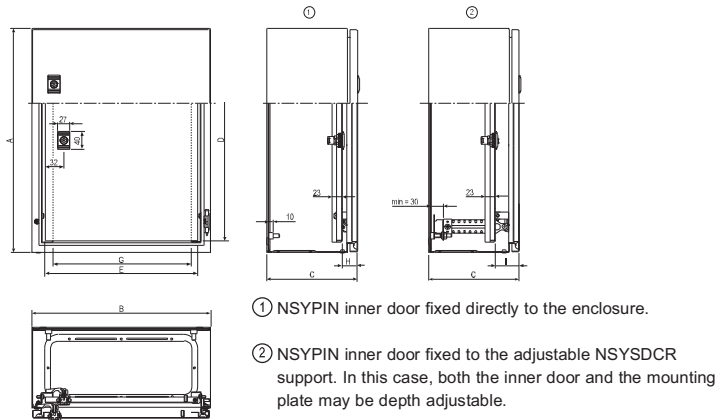
- 3-mm double-bar lock.
- The inner door can be mounted either on the front side of the enclosure or on step slides (not supplied with standard).
- Maximum load: 30 kg/m².
- As standard it can be mounted an inner door and a mounting plate, on the step slides, at the same time.
- Not compatible with door retainer and door switch. Consult us.

 Composition: 1 inner door.

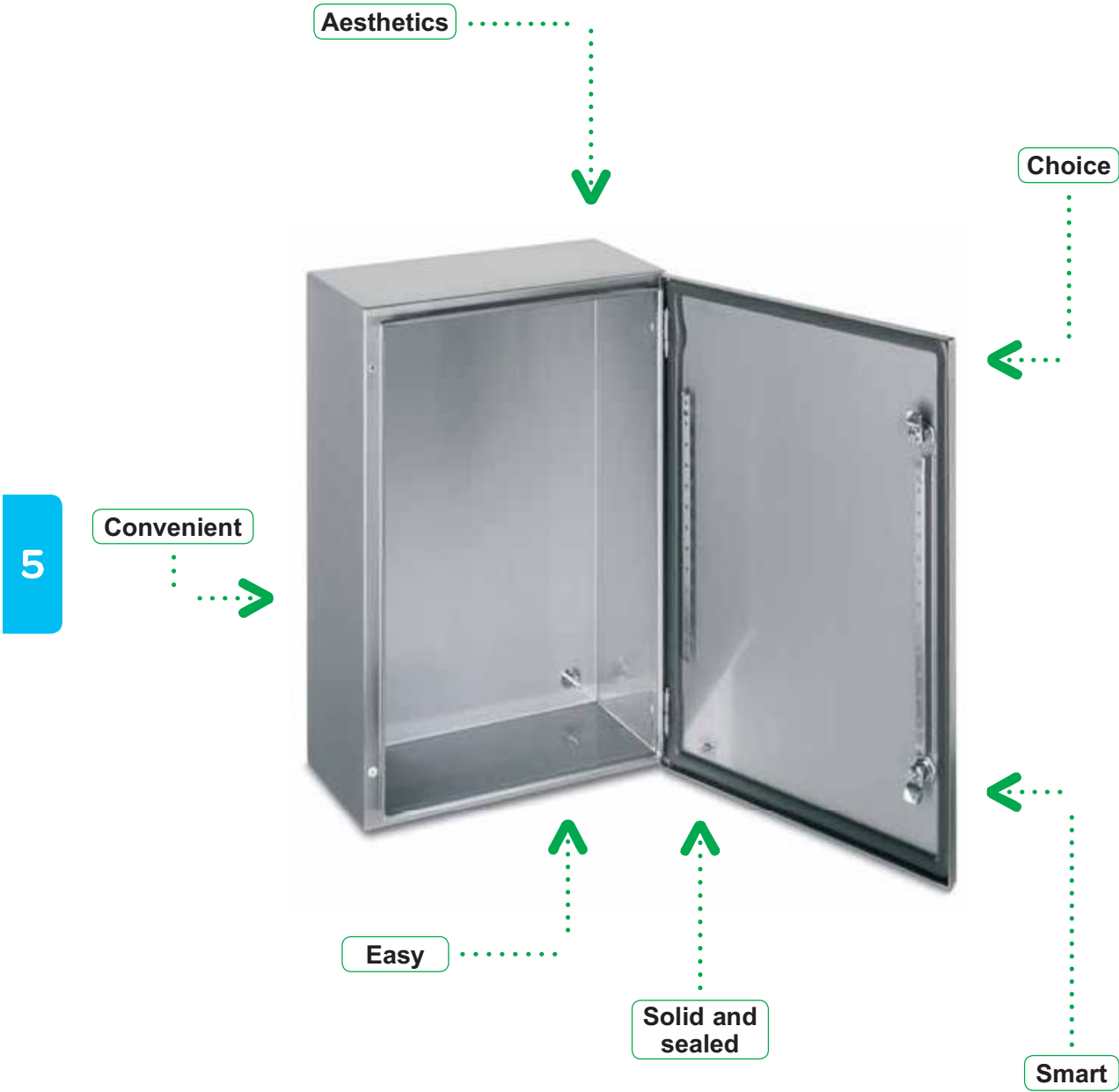
For wall-mounting enclosures		Reference	D	E	G	H	I min.
Height (A)	Width (B)						
400	300	NSYPIN43	349	241	208	32	51
500	400	NSYPIN54	449	341	308	32	51
600	400	NSYPIN64	549	341	308	32	51
700	500	NSYPIN75	649	441	408	32	51
800	600	NSYPIN86*	749	541	508	32	51
1000	800	NSYPIN108*	949	741	708	32	51
1200	800	NSYPIN128*	1149	741	708	32	52

\* Equipped with welded vertical profiles in order to facilitate cable management.

Spacial S3X stainless-steel enclosures dimensions



Spacial S3XEX compliant with the ATEX directive



## Spacial S3XEX

### Aesthetics:

Stainless-steel enclosure with no cut-out.  
Scotch-Brite® brushed finish.  
Monobloc body with a cross-shaped structure.

### Choice:

Plain door: 7 references.  
Plain mounting plate.  
Silkscreened mounting plate.  
Microperforated mounting plate.  
Telequick mounting plate.  
DIN rail chassis.

### Solid and sealed:

Resistance to external mechanical impacts: IK10.  
Protection rating: IP66. Polyurethane gasket.  
Gutter-shaped front profile.

### Smart:

3-mm double-bar lock as standard.  
Door rails cut-out with a pitch of 25 mm allowing accessories to be mounted on the door.

### Easy:

The 4 fixing holes are blocked by four crimped blind nuts.  
The door can be easily removed and turned over to open towards the left.

### Convenient:

Large variety of common accessories with the Spacial S3X range.  
Reusable packaging.



Blind nut for external earth connection (on request).



Earthing studs welded to the door and in the body.



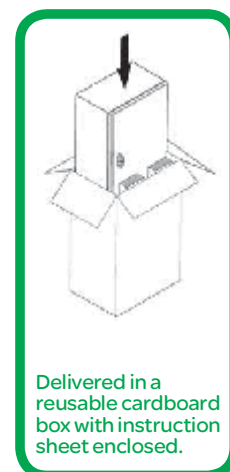
The mounting plates are mounted on 4 10-mm shouldered backstuds.



The 4 fixing holes are blocked by 4 crimped blind nuts.



Specific ATEX marking.



Delivered in a reusable cardboard box with instruction sheet enclosed.



5

The compulsory wall-fixing lugs:

- 304 stainless steel: reference **NSYPFCX**.
- 316L stainless steel: reference **NSYPFC2X**.

## Technical characteristics

The Spacial ATEX range of stainless-steel enclosures is certified by the LOM with no. LOM 08ATEX3028U (component certificate).

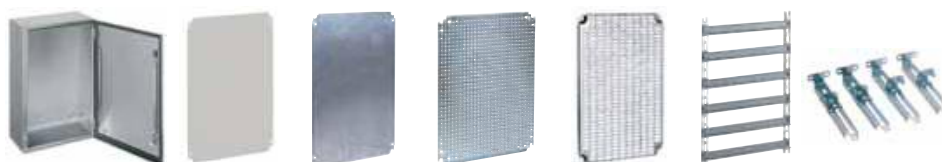
The enclosures have the following marks:  
 Ex II 2 GD Ex e II Ex tD A21 IP66 according to ATEX directive 94/9/EC and standards EN 60079-0 (2004), EN 60079-7 (2006), EN 61241-0 (2005) and EN 61241-1 (2004).



Download our ATEX certificates and product sheets over the internet.

- Stainless-steel material: AISI 304L with Scotch-Brite® brushed finish.
- Plain door.
- Protection rating of IP66 according to IEC 60529.
- Resistance to external mechanical impacts of IK10 according to IEC 62262.
- Single-piece body (cross-shaped structure). Gutter-shaped front profile.
- 2 perforated vertical profiles on the door (from a height of 600 mm), with drill holes with a diameter of 4.25 mm and a pitch of 25 mm for installing accessories.
- Door reinforcement frame (from a height of 1000 mm), cross-section of 20 mm × 15 mm, with drill holes with a diameter of 5 mm and a pitch of 25 mm.
- Standard closure with 3-mm double-bar lock (chrome-plated zamak).
- 2 closure points for heights of more than 500 mm.
- Stainless-steel hinges screwed onto the body of the enclosure, making it easier to remove and invert the door. Opening angle: 120°.
- Polyurethane gasket.
- M6 × 16 screws on the door and on the body, allowing equipotential connection.
- The wall-fixing lugs are compulsory; they are blocked by sealing plugs. The 4 fixing holes are blocked by 4 crimped blind nuts.
- One crimped M6 blind nut for an external earth connection (braid not supplied).
- Authorised ambient temperature limits:  
 –25 °C ≤ Ta ≤ +60 °C

## Selection guide for wall-mounting enclosures and main accessories



External dimensions (mm)			Enclosure reference	Mounting plate reference				DIN rail chassis	Step slides
Height	Width	Depth		Plain	Silkscreened	Microperforated	Telequick		
300	200	150	NSYS3XEX3215	NSYMM32	-	NSYMF32	NSYMR32	-	-
400	300	200	NSYS3XEX4320	NSYMM43	NSYMS43	NSYMF43	NSYMR43	NSYMD43	NSYSDCR200
500	400	200	NSYS3XEX5420	NSYMM54	NSYMS54	NSYMF54	NSYMR54	NSYMD54	NSYSDCR200
600	400	200	NSYS3XEX6420	NSYMM64	NSYMS64	NSYMF64	NSYMR64	NSYMD64	NSYSDCR200
700	500	250	NSYS3XEX7525	NSYMM75	NSYMS75	NSYMF75	NSYMR75	NSYMD75	NSYSDCR250
800	600	250	NSYS3XEX8625	NSYMM86	NSYMS86	NSYMF86	NSYMR86	NSYMD86	NSYSDCR250
1000	800	300	NSYS3XEX10830	NSYMM108	-	NSYMF108	NSYMR108	NSYMD108	NSYSDCR300



The accessories of the Spacial S3X enclosure can be installed in the Spacial S3XEX enclosure. However, plastic accessories should not be used, due to the risk of a static charge.

External dimensions (mm)			
Height (A)	Width (B)	Depth (C)	Fig.
300	200	150	1
400	300	200	1
500	400	200	2*
600	400	200	2
700	500	250	2
800	600	250	2
1000	800	300	3

\*Without door reinforcement.

Fig. 1

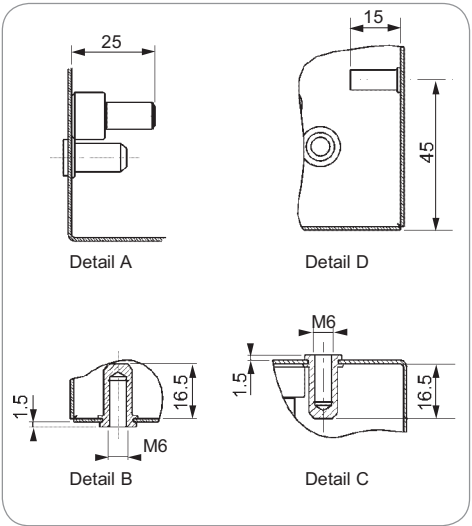
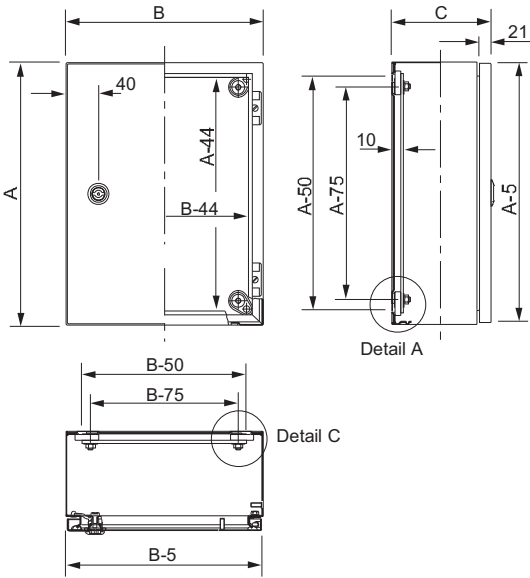


Fig. 2

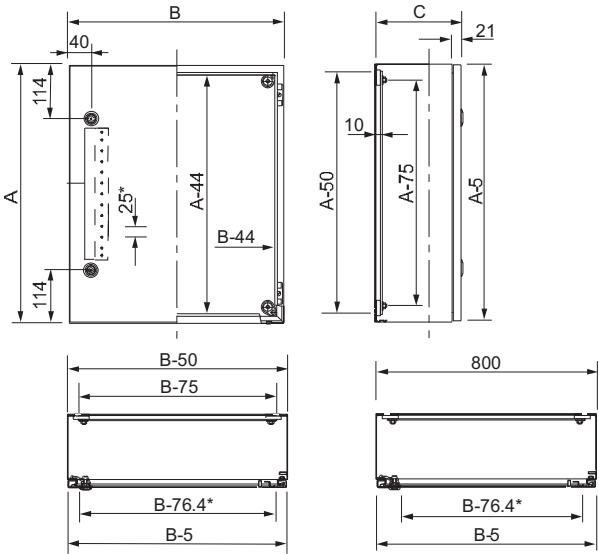
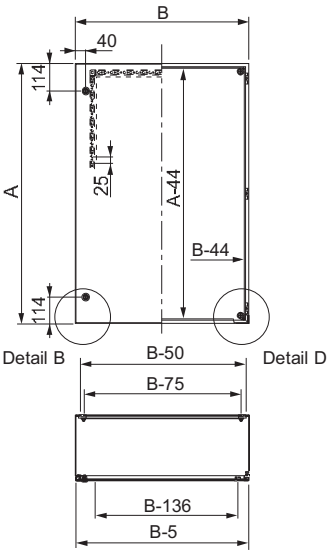


Fig. 3



\*Door reinforcement.

# Stainless-steel monobloc floor-standing enclosures

5

Material and finishes

Convenience and time saving

Hygiene

Sealing

Compatible with the other ranges

Robustness and durability



### Material and finishes:

#### Stainless-steel grade:

AISI 304L and 316L as standard.

#### Finishes:

Scotch-Brite® brushed (standard).

Micro-beaded (on request).

Painted (on request).

### Resistance to corrosion:

High resistance to corrosion. 304L and 316L stainless steels provide the best solutions for applications in extremely demanding environments.



### Convenience and time saving:

Complete range of accessories for installation, cable management, etc.

316L stainless-steel plinth: easy cable entry.

Reversible door opening to 120°.

Padlock lock with key or form insert.

Adjustment rails perforated with a pitch of 25 mm.

Perforated reinforcement frame allowing accessories to be mounted on the door.



### Sealing:

Protection rating of IP 55 (IEC 60529): complete protection against dust and water sprays.

3-point closures.

Canopy (optional):

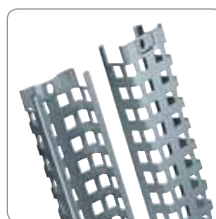
- protects the sealing plane of the door,
- guarantees correct water drainage,
- no stagnation on the top.

Single-piece cable-gland plate with polyurethane gasket.



### Compatible with the other ranges:

The mounting plates and other accessories of the Spacial SM standard metal offer.



### Hygiene:

The high quality of the standard finish enables very easy maintenance while avoiding contamination.

The hygienic feet made from 316L stainless steel, 100 mm and 200 mm high, make it easier to clean under the enclosures.



### Robustness and durability:

Resistance to external mechanical impacts: IK 10 according to IEC 62262.

3 hinges made entirely from stainless steel.

Door reinforcement frame.



# Stainless-steel monobloc floor-standing enclosures

## Introduction



### Technical characteristics

These enclosures have been specially designed for the chemical, oil and food and beverage industries, among others, which are particularly demanding in terms of hygiene and resistance to corrosion.

- Stainless-steel sheet floor-standing enclosure, 1.5 mm thick, folded and welded.
- Two types of materials, with Scotch-Brite® brushed finish, are available:
  - 304L stainless steel,
  - 316L stainless steel.
- Micro-beaded and painted finishes (on request).
- Protection rating: IP 55 according to IEC 60529.
- 1 Nema door, type 1, 2, 3, 3R, 4, 4X, 5, 12, 12K, 13.
- 2 Nema doors, type 1, 2, 12K.
- Resistance to external mechanical impacts: IK 10 according to IEC 62262.
- Plain front door. Opening to left or right to 120° with reinforcement frame. Installed on 3 stainless-steel hinges. 3-point closure with handle made from painted zamak, 5-mm double bar.
- Acceptable load of 50 kg.
- Delivered with 4 mounting plate-supporting brackets.
- Single-piece cable-gland plate delivered.
- 316L stainless-steel plinths, optional heights of 100 and 200 mm.
- Optional stainless-steel canopies.
- Optional eyebolts.
- Maximum load: 830 kg when slinging at 60°.
- For more information on the technical features of the different types of finishes: see page 5/5.

### Certifications

- IEC 62208.
- UL 508.
- CAN/CSA 22.

5



Specific



External dimensions (mm)			Number of front doors	Stainless-steel floor-standing enclosure 304L / 316L*	Brushed 316L stainless-steel plinth height 100 mm **		Brushed 316L stainless-steel plinth height 200 mm **		Plain mounting plate ***
Height	Width	Depth			Front + corner	Side	Front + corner	Side	
1400	1000	300	2	NSYSMX141030	NSYSPXF10100H	NSYSPXS3100H	NSYSPXF10200H	2 x NSYSPXS3100H	NSYMP1410
1600	800	400	1	NSYSMX16840	NSYSPXF8100H	NSYSPXS4100H	NSYSPXF8200H	2 x NSYSPXS4100H	NSYMP168
1800	600	400	1	NSYSMX18640	NSYSPXF6100H	NSYSPXS4100H	NSYSPXF6200H	2 x NSYSPXS4100H	NSYMP186
1800	800	400	1	NSYSMX18840*	NSYSPXF8100H	NSYSPXS4100H	NSYSPXF8200H	2 x NSYSPXS4100H	NSYMP188
1800	1200	400	2	NSYSMX181240*	NSYSPXF12100H	NSYSPXS4100H	NSYSPXF12200H	2 x NSYSPXS4100H	NSYMP1812
1800	1600	400	2	NSYSMX181640*	NSYSPXF16100H	NSYSPXS4100H	NSYSPXF16200H	2 x NSYSPXS4100H	NSYMP1813
2000	800	500	1	NSYSMX20850	NSYSPXF8100H	NSYSPXS5100H	NSYSPXF8200H	2 x NSYSPXS5100H	NSYMP208
2000	1000	400	2	NSYSMX201040*	NSYSPXF10100H	NSYSPXS4100H	NSYSPXF10200H	2 x NSYSPXS4100H	NSYMP2010
2000	1200	500	2	NSYSMX201250*	NSYSPXF12100H	NSYSPXS5100H	NSYSPXF12200H	2 x NSYSPXS5100H	NSYMP2012
2000	1600	600	2	NSYSMX201660*	NSYSPXF16100H	NSYSPXS6100H	NSYSPXF16200H	2 x NSYSPXS6100H	NSYMP2016

\* For version in AISI 316L stainless steel, add the letter H to the end of the reference. Example NSYSMX18840H

\*\* See section on stainless-steel composition accessories.

\*\*\* See other mounting plates in common accessories.

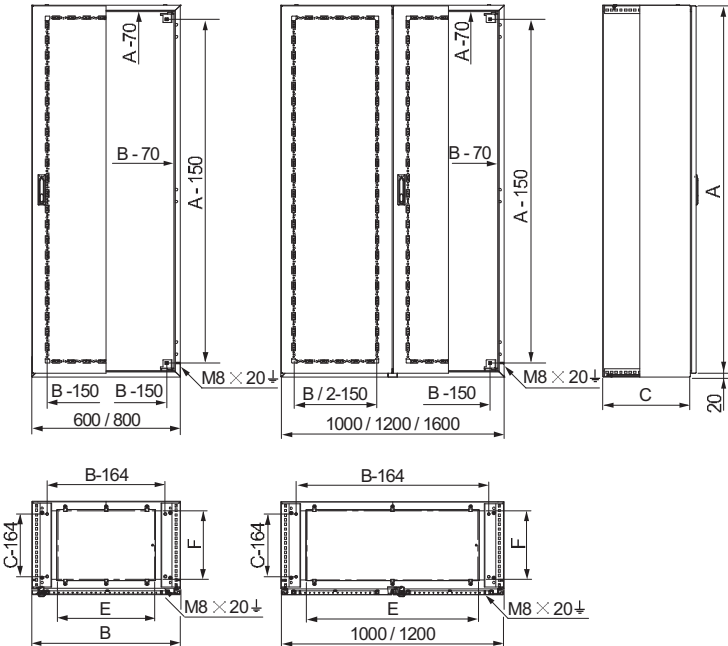
# Stainless-steel monobloc floor-standing enclosures

## Dimensions

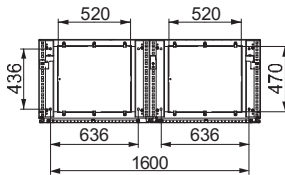


304L and 316L stainless-steel floor-standing enclosures:

Floor-standing enclosure dimensions (mm)			No. of cable-gland plates	Dimensions (mm)	
Height (A)	Width (B)	Depth (C)		E	F
1400	1000	300	1	720	270
1600	800	400	1	520	270
1800	600	400	1	520	270
1800	800	400	1	520	270
1800	1200	400	1	920	270
1800	1600	400	2	1320	270
2000	800	500	1	520	370
2000	1000	400	1	720	270
2000	1200	500	1	920	370
2000	1600	600	2	1320	470



Enclosure width of 1000 and 1200 mm.



Enclosure width of 1600 mm.

# Stainless-steel suitable enclosures

5

Material and finishes

Resistance to corrosion

Hygiene

Robustness and durability

Convenience and time saving

Sealing

Compatible with the other ranges



### Material and finishes:

#### Stainless-steel grade:

AISI 304L as standard.

AISI 316L (on request).

#### Finishes:

Scotch-Brite® brushed (standard).

Micro-beaded (on request).

Painted (on request).

### Resistance to corrosion:

High resistance to corrosion. 304L and 316L stainless steels provide the best solutions for applications in extremely demanding environments.



### Convenience and time saving:

Complete range of accessories for installation, cable management, etc.

304L or 316L stainless-steel plinth: easy cable entry.

Reversible door opening to 120°.

Padlock lock with key or form insert.

Adjustment rails perforated with a pitch of 25 mm.

Perforated reinforcement frame allowing accessories to be mounted on the door.



### Sealing:

Protection rating of IP 55 (IEC 60529): complete protection against dust and water sprays.

3-point closures.

Canopy (optional):

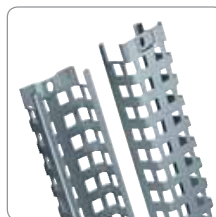
- protects the sealing plane of the door,
- guarantees correct water drainage,
- no stagnation on the top.

Single-piece cable-gland plate with polyurethane gasket.



### Compatible with the other ranges:

The mounting plates and other accessories of the Spacial SF standard metal offer.



### Hygiene:

The high quality of the standard finish enables very easy maintenance while avoiding contamination.

The hygienic feet made from 316L stainless steel, 100 mm and 200 mm high, make it easier to clean under the enclosures.



### Robustness and durability:

Resistance to external mechanical impacts: IK 10 according to IEC 62262.

3 hinges made entirely from stainless steel.

Door reinforcement frame.



# Stainless-steel suitable enclosures

## Introduction



### Technical characteristics

These enclosures have been specially designed for the chemical, oil and food and beverage industries, among others, which are particularly demanding in terms of hygiene and resistance to corrosion.

- Enclosure made up of a structure, consisting of top and bottom, rear panel and vertical profiles.
- Made from AISI 304L stainless steel with Scotch-Brite® brushed finish.
- Available on request:
  - 316L version.
  - Micro-beaded and painted finish.
- Protection rating of IP55 according to standard IEC 60529.
- High resistance to mechanical impacts: IK 10 according to standard IEC 62262.
- Plain front door. Opening to left or right to 120° with reinforcement frame installed.
  - 3 stainless-steel hinges.
  - 3-point closure with handle made from painted zamak, 5-mm double bar.
  - Acceptable load of 50 kg.
- Single-piece cable-gland plate delivered.
- Optional 316L stainless-steel plinths, heights of 100 and 200 mm.
- Optional stainless-steel canopies.
- Optional eyebolt.
- Maximum load: 830 kg when slinging at 60°.

### Basic composition

- Structure consisting of top and bottom, rear panel and vertical profiles.
- Single front door, with reinforcement frame.
- Sash-bolt handle made from painted zamak, 3-mm double bar.
- 4 mounting plate-supporting brackets.
- Single-piece cable-gland plate with sealing gasket.

Note: the panels and plinths can be installed and the enclosures can be assembled (on request).



Specific

## Spacial SFX suitable enclosures



External dimensions (mm)			Number of front doors	References in 304L stainless steel (1)			Brushed 316L stainless-steel plinth height 100 mm (2)		Brushed 316L stainless-steel plinth height 200 mm (2)		Plain mounting plate (3)
Height (A)	Width (B)	Depth (C)		Suitable enclosure	Set of 2 side panels	Coupling kit	Front + corner	Side	Front + corner	Side	
1800	600	400	1	NSYSFX18640	NSY2SPX184	NSYSFBK19	NSYSPXF6100H	NSYSPXS4100H	NSYSPXF6200H	2 × NSYSPXS4100H	NSYMP186
1800	800	400	1	NSYSFX18840	NSY2SPX184	NSYSFBK19	NSYSPXF8100H	NSYSPXS4100H	NSYSPXF8200H	2 × NSYSPXS4100H	NSYMP188
1800	1200	400	2	NSYSFX181240	NSY2SPX184	NSYSFBK19	NSYSPXF12100H	NSYSPXS4100H	NSYSPXF12200H	2 × NSYSPXS4100H	NSYMP1812
2000	600	500	1	NSYSFX20650	NSY2SPX205	NSYSFBK19	NSYSPXF6100H	NSYSPXS5100H	NSYSPXF6200H	2 × NSYSPXS5100H	NSYMP206
2000	800	400	1	NSYSFX20840	NSY2SPX204	NSYSFBK19	NSYSPXF8100H	NSYSPXS4100H	NSYSPXF8200H	2 × NSYSPXS4100H	NSYMP208
2000	800	600	1	NSYSFX20860	NSY2SPX206	NSYSFBK19	NSYSPXF8100H	NSYSPXS6100H	NSYSPXF8200H	2 × NSYSPXS6100H	NSYMP208
2000	1000	600	2	NSYSFX201060	NSY2SPX206	NSYSFBK19	NSYSPXF10100H	NSYSPXS6100H	NSYSPXF10200H	2 × NSYSPXS6100H	NSYMP2010
2000	1200	600	2	NSYSFX201260	NSY2SPX206	NSYSFBK19	NSYSPXF12100H	NSYSPXS6100H	NSYSPXF12200H	2 × NSYSPXS6100H	NSYMP2012

(1) 316L stainless-steel enclosures on request.

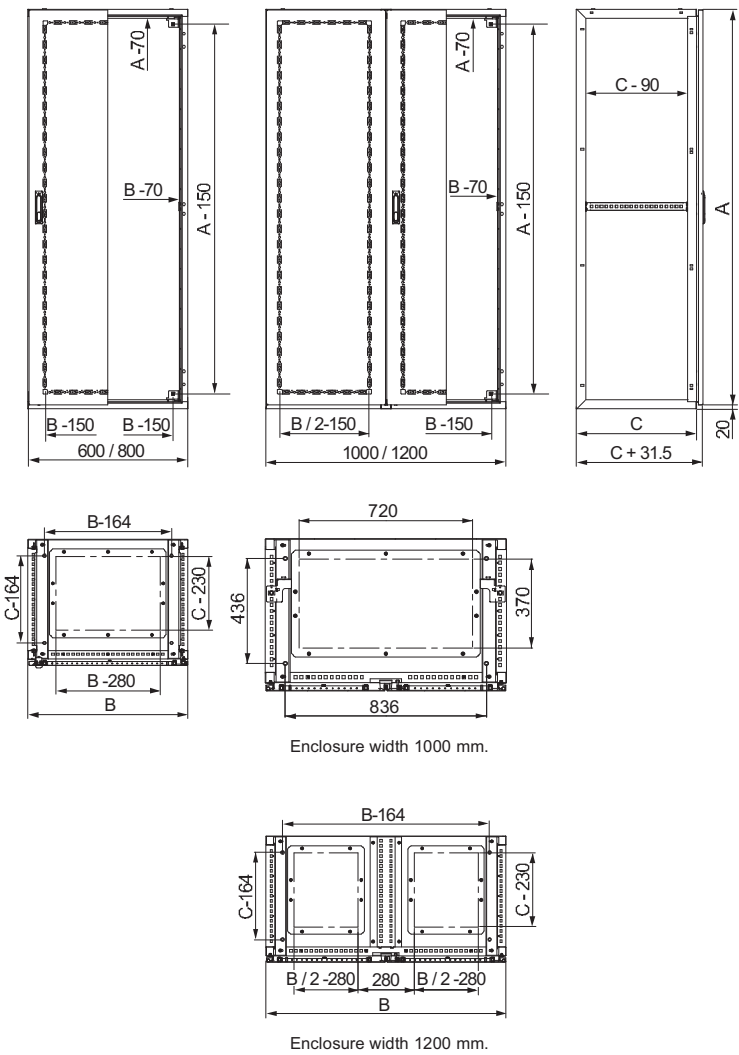
(2) See section on stainless-steel composition accessories.

(3) See other mounting plates in common accessories.

# Stainless-steel suitable enclosures

## Dimensions

External dimensions (mm)			Number of front doors
Height (A)	Width (B)	Depth (C)	
1800	600	400	1
1800	800	400	1
1800	1200	400	2
2000	600	500	1
2000	800	400	1
2000	800	600	1
2000	1000	600	2
2000	1200	600	2



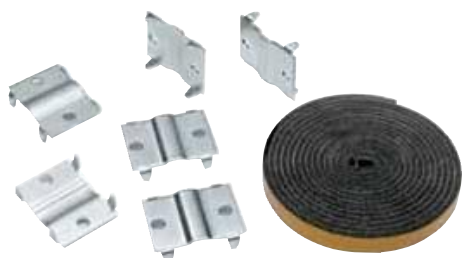
## Composition accessories



### Side panels for stainless-steel suitable enclosure for SFX

- Side panels including a polyurethane sealing gasket.
- Their special design guarantees the protection of the door gasket.

For suitable enclosure (mm)		Reference
Height	Depth	
1800	400	NSY2SPX184
2000	400	NSY2SPX204
2000	500	NSY2SPX205
2000	600	NSY2SPX206



### Coupling kit for SFX

- Used for joining enclosures side by side.
- Fixing from the inside of the enclosures.
- Degree of protection: IP55.
- Material:
  - Flat connectors and brackets: zinc-coated steel.
  - Sealing gasket: EPDM.

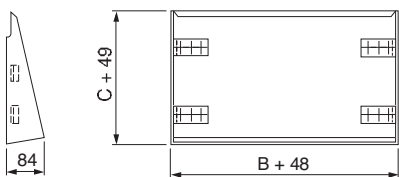
Reference
NSYSFBK19



### Top-mounting accessories Canopy for SMX and SFX

- Guarantees very high protection of the enclosure when used outdoors.
- It is fixed in the same holes as the eyebolt. Delivered with fixings.
- Material: 304L stainless-steel sheet, 1.5 mm thick, Scotch-Brite® brushed finish.
- Other finishes or other types of stainless steel: contact us.

For enclosures with dimensions (mm)		Reference
Width (B)	Depth (C)	
600	400	NSYSCX6040
600	500	NSYSCX6050
800	400	NSYSCX8040
800	500	NSYSCX8050
800	600	NSYSCX8060
1000	300	NSYSCX10030
1000	400	NSYSCX10040
1000	600	NSYSCX10060
1200	400	NSYSCX12040
1200	500	NSYSCX12050
1200	600	NSYSCX12060
1600	400	NSYSCX16040
1600	600	NSYSCX16060

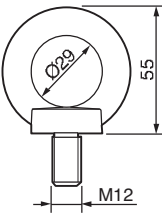




Eyebolts

- Set of four M12 eyebolts.
- Material: treated moulded steel.
- It is fixed using fixing nuts supplied with the enclosure.
- Maximum load: 830 kg when slinging at 60°.

Reference  
NSYSMEB



Lifting bracket for stainless-steel suitable enclosure for SFX

- Set of four lifting brackets.
- Material: treated steel.
- They are fixed instead of the eyebolts on two suitable enclosures side-by-side, guaranteeing the rigidity of the enclosure when lifted.
- Maximum load: 2000 kg when slinging at 60°.

Reference  
NSYPUNX



Closure option

- The enclosures are delivered as standard with handle made from painted zamak, 5 mm double bar (1242E, 405E, 455E, 6.5-mm triangle available).
- Large range of standard inserts available.

Description	Pack.	Reference
Spare handle	1	NSYMCSX
5-mm double-bar insert	1	NSYTDB5ME
6-mm square insert	1	NSYTC6ME
7-mm square insert	1	NSYTC7ME
8-mm square insert	1	NSYTC8ME
6.5-mm triangular insert	1	NSYTT6ME
8-mm triangular insert	1	NSYTT8ME
Padlocking device	1	NSYBCME

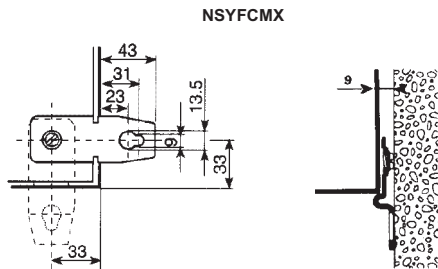
# Stainless-steel composition accessories



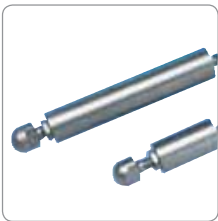
## Wall-fixing lugs for SMX

- Set of four 304 stainless-steel wall-fixing lugs.
- Mounting of the wall-fixing lugs in horizontal or vertical position.
- Fixing from the outside.
- Maximum load: horizontal 180 kg and vertical 350 kg.

Reference
NSYFCMX



5



## Hygienic feet

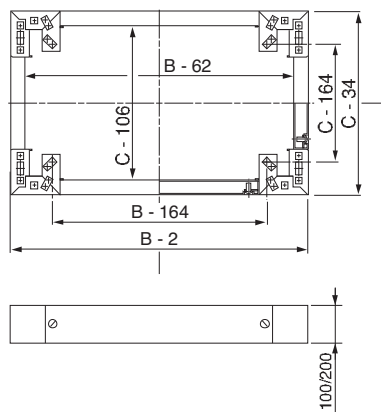
- Set of 4 adjustable feet.
- Made from 316L stainless steel, making it easier to clean under the enclosure.
- Recommended for applications that require special hygiene conditions.
- Available in heights of 100 or 200 mm.
- Maximum admissible load per foot: 100 kg.

Height (mm)	Reference
100	NSYPHX100
200	NSYPHX200

# Stainless-steel composition accessories

## Stainless-steel plinths

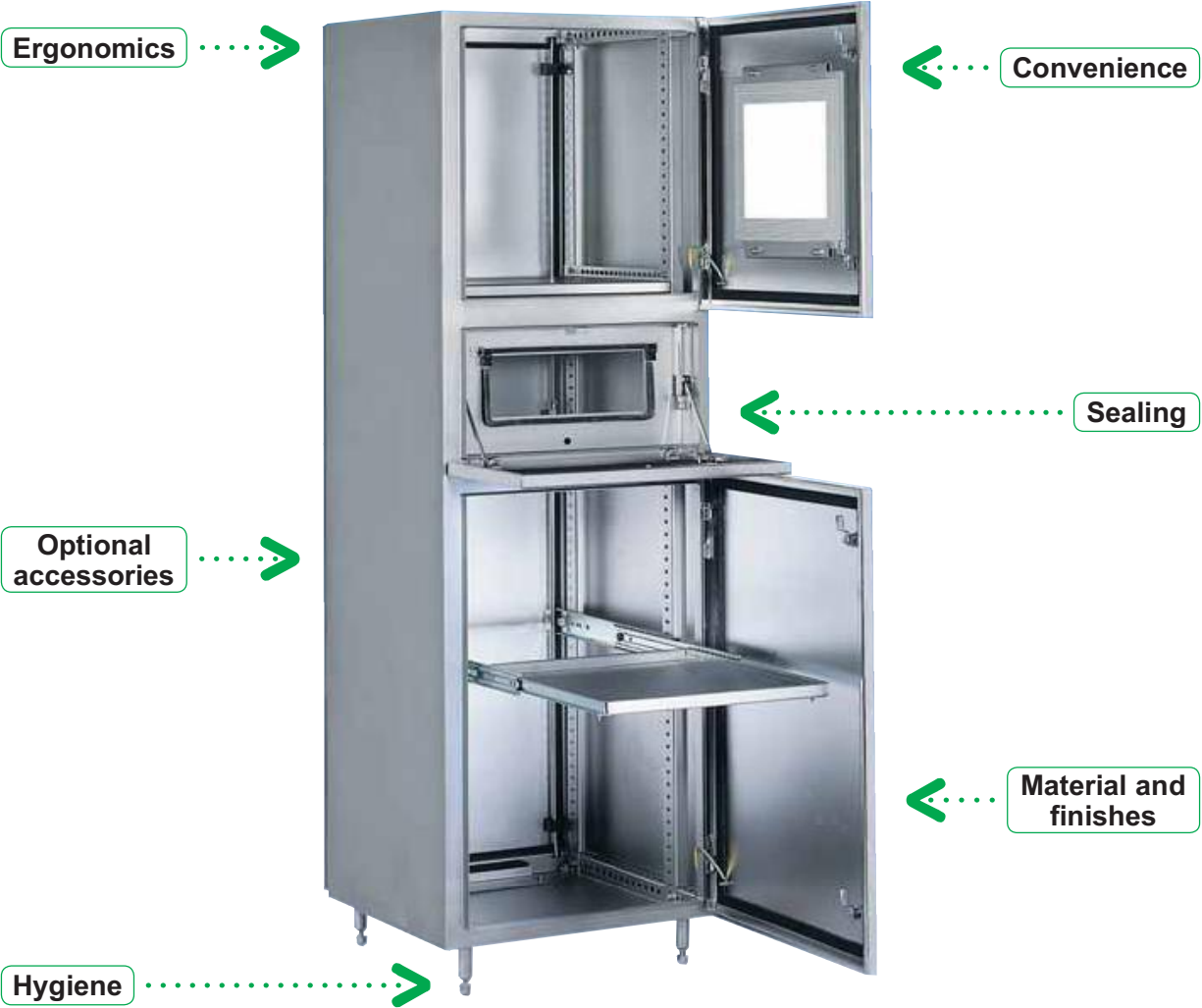
- Mounting in the holes for fixing the enclosures to the floor.
- Made from high quality stainless steel, AISI 316L Scotch-Brite® brushing, to guarantee the durability in application where the contact with the floor increase the risk of corrosion.
- Available in two heights: 100 and 200 mm.



External dimensions (mm)		Brushed 316L stainless-steel plinth height 100 mm (1)		Brushed 316L stainless-steel plinth height 200 mm (1)	
Width (B)	Depth (C)	Front + corner	Side	Front + corner	Side
600	400	NSYSPXF6100H	NSYSPXS4100H	NSYSPXF6200H	2 × NSYSPXS4100H
600	500	NSYSPXF6100H	NSYSPXS5100H	NSYSPXF6200H	2 × NSYSPXS5100H
600	600	NSYSPXF6100H	NSYSPXS6100H	NSYSPXF6200H	2 × NSYSPXS6100H
600	800	NSYSPXF6100H	NSYSPXS8100H	NSYSPXF6200H	2 × NSYSPXS8100H
800	400	NSYSPXF8100H	NSYSPXS4100H	NSYSPXF8200H	2 × NSYSPXS4100H
800	500	NSYSPXF8100H	NSYSPXS5100H	NSYSPXF8200H	2 × NSYSPXS5100H
800	600	NSYSPXF8100H	NSYSPXS6100H	NSYSPXF8200H	2 × NSYSPXS6100H
1000	300	NSYSPXF10100H	NSYSPXS3100H	NSYSPXF10200H	2 × NSYSPXS3100H
1000	400	NSYSPXF10100H	NSYSPXS4100H	NSYSPXF10200H	2 × NSYSPXS4100H
1000	500	NSYSPXF10100H	NSYSPXS5100H	NSYSPXF10200H	2 × NSYSPXS5100H
1000	600	NSYSPXF10100H	NSYSPXS6100H	NSYSPXF10200H	2 × NSYSPXS6100H
1200	400	NSYSPXF12100H	NSYSPXS4100H	NSYSPXF12200H	2 × NSYSPXS4100H
1200	500	NSYSPXF12100H	NSYSPXS5100H	NSYSPXF12200H	2 × NSYSPXS5100H
1200	600	NSYSPXF12100H	NSYSPXS6100H	NSYSPXF12200H	2 × NSYSPXS6100H
1600	400	NSYSPXF16100H	NSYSPXS4100H	NSYSPXF16200H	2 × NSYSPXS4100H
1600	600	NSYSPXF16100H	NSYSPXS6100H	NSYSPXF16200H	2 × NSYSPXS6100H

# Stainless-steel monobloc PC racks

5



## Spacial SMX

### Convenience:

Anti-glare glazed door designed for viewing 14" and 17" screens by removing part of the silkscreen printing.  
Cable entry made easier by a cable-gland plate (at the rear) in 2 pieces.



### Sealing:

IP 55, even with the keyboard drawer open, thanks to the pivoting Plexiglas shutter.



### Resistance to mechanical impacts:

Resistance to external mechanical impacts: IK 10.



### Optional accessories:

Shelf mounted on telescopic rails.



### Ergonomic:

Partial doors delimit the access to each function with a 3-mm double-bar lock.  
Access to the various functions and working heights, guaranteeing optimum comfort.  
Built-in screen and CPU support.  
Built-in mouse support.



### Hygiene:

The high quality of the standard finish enables very easy maintenance while avoiding contamination.  
The hygienic feet made from 316L stainless steel, 100 mm and 200 mm high, make it easier to clean under the enclosures.



### Resistance to corrosion:

High resistance to corrosion. 304L and 316L stainless steels provide the best solutions for applications in extremely demanding environments.

### Material and finishes:

Micro-beaded 304L as standard.  
Micro-beaded 316L on request.

# Stainless-steel monobloc PC racks

## Introduction



### Technical characteristics

The stainless-steel monobloc PC racks have been especially designed to protect computer equipment installed in corrosive or specially environments that require washing or exposure to sprays of liquid.

### Composition

- Monobloc structure in 304L stainless-steel sheet, micro-beaded finish.
- Can be made in 316L stainless steel on request.
- Top and bottom partial doors on the front side.
- Pivoting panel for the keyboard.
- Plain rear door.

### Execution

- Protection rating: IP 55, even with the keyboard drawer open.
- High resistance to mechanical impacts: IK 10 according to standard IEC 62262.

### Ergonomics

- Partial front doors delimit the access to each function with a 3-mm double-bar lock (other inserts or key locks available).
- Glued anti-glare window.
- Access to the various functions and working heights, guaranteeing optimum comfort during use.

### Monitor-screen compartment

- The anti-glare glazed door is designed for viewing screens:
  - 14" as standard,
  - 17" by removing a part of the silkscreen printing.
- The height of the monitor support can be adjusted.
- The monitor shelf can withstand a maximum weight of 50 kg.

### CPU / keyboard compartment

- The keyboard fixed to the inside becomes operational by tilting the central panel.
- The CPU is placed on a height-adjustable shelf, visible and accessible through a pivoting, transparent shutter.

### Optional accessories

- Shelf installed on a sliding rail, with adjustable height.
- Plinths with heights of 100 and 200 mm.
- Telescopic tray: **NSYTTG60**



Specific

## 304L stainless-steel PC racks



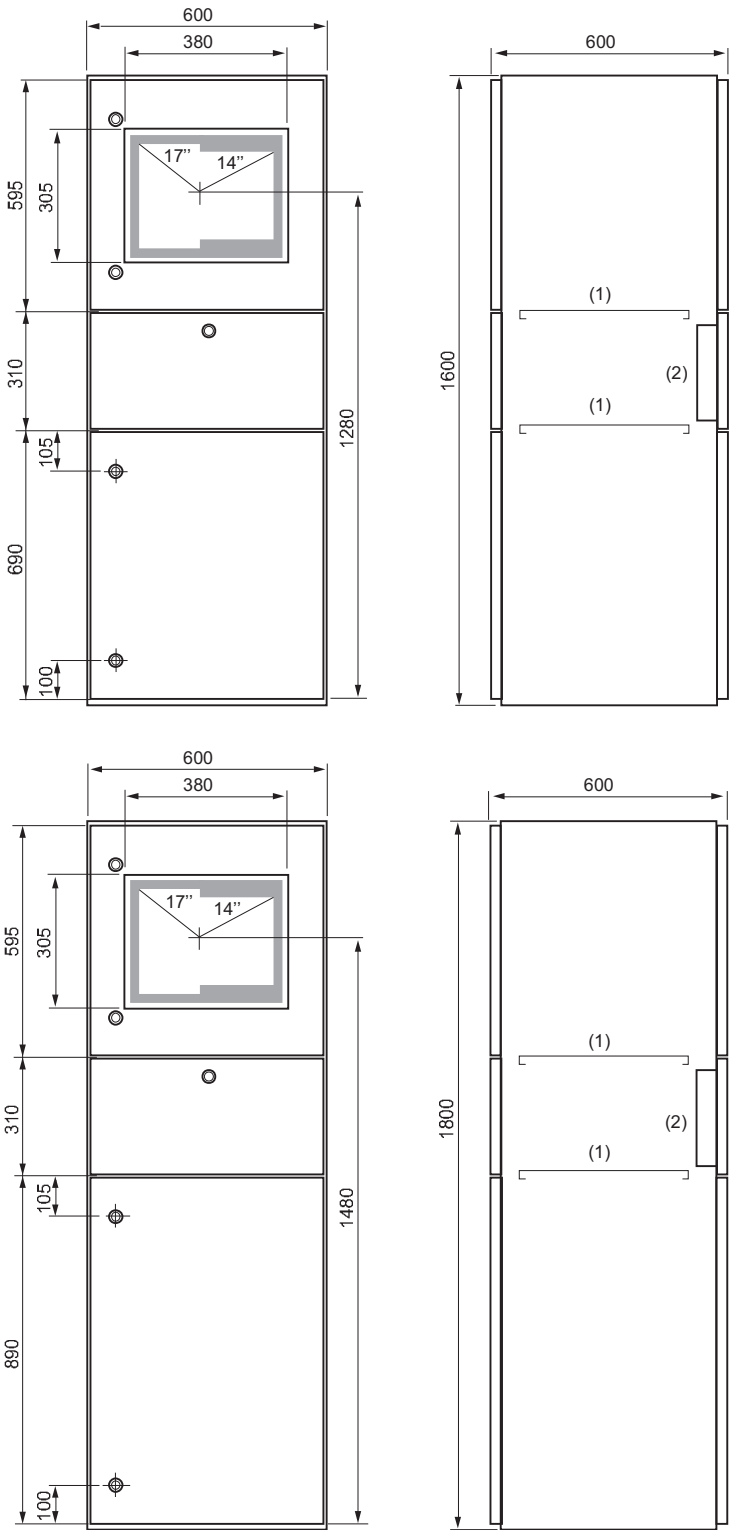
External dimensions (mm)			Stainless-steel PC rack reference	Hygienic feet		Brushed 316L stainless-steel plinth height 100 mm (1)		Brushed 316L stainless-steel plinth height 200 mm (1)	
Height	Width	Depth		Height 100 (mm)	Height 200 (mm)	Front + corner	Side	Front + corner	Side
1600	600	600	NSYSMX16660PC	NSYPHX100	NSYPHX200	NSYSPXF6100H	NSYSPXS6100H	NSYSPXF6200H	2 × NSYSPXS6100H
1600	600	800	NSYSMX16680PC	NSYPHX100	NSYPHX200	NSYSPXF6100H	NSYSPXS8100H	NSYSPXF6200H	2 × NSYSPXS8100H
1800	600	600	NSYSMX18660PC	NSYPHX100	NSYPHX200	NSYSPXF6100H	NSYSPXS6100H	NSYSPXF6200H	2 × NSYSPXS6100H
1800	600	800	NSYSMX18680PC	NSYPHX100	NSYPHX200	NSYSPXF6100H	NSYSPXS8100H	NSYSPXF6200H	2 × NSYSPXS8100H

(1) See section on stainless-steel composition accessories.

# Stainless-steel monobloc

## PC racks

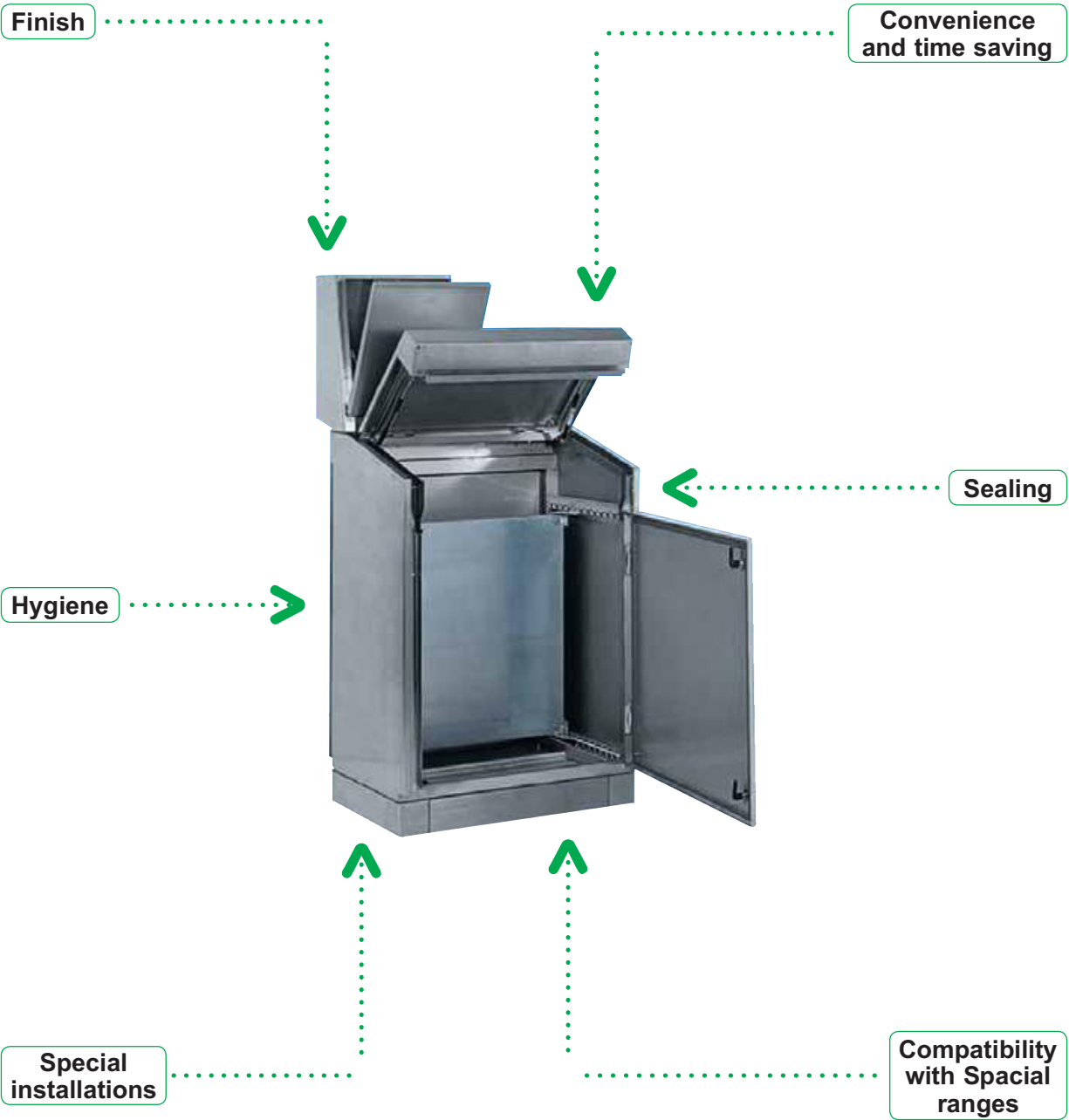
### Dimensions



- (1) Screwed shelf, adjustable height.
- (2) Sealed case for keyboard.

# Stainless-steel control desks

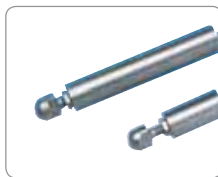
5



## Spacial SDX

### Hygiene:

The high quality of the standard finish enables very easy maintenance while avoiding contamination. The hygienic feet made from 316L stainless steel, 100 mm and 200 mm high, make it easier to clean under the enclosures.



### Sealing:

- Protection rating of IP 55:
  - complete protection against dust and water sprays.
- Door and body gaskets made from polyurethane.
- Single-piece cable-gland plate with polyurethane gasket.
- Removable plates for concealing the free space left by the console.



### Resistance to corrosion:

High resistance to corrosion. 304L and 316L stainless steels provide the best solutions for applications in extremely demanding environments.



### Finishes:

304L stainless steel with Scotch-Brite® brushed finish as standard.  
Micro-beaded 316L (on request).

### Compatibility with the other ranges:

- Stainless-steel accessories:
  - plinths, locks.
- Accessories of the standard offer:
  - mounting plate, pneumatic opening stay, etc.

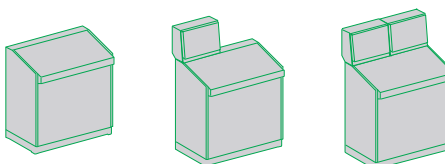


### Convenient:

The association of a monobloc control desk with one or more consoles enables all combinations. Complete accessibility to the inside of the control desk thanks to its design without intermediate crossbars. The desk lid and the console are equipped with pneumatic opening stays (opening to 75°) allowing complete access to the inside and preventing sudden falls of the console or the hinged cover. Equipped with adjustment rails for adjusting the depth of the mounting plate. Removable rear panel.



### Examples of associations of consoles and control desks:



Multiple combinations available.

# Stainless-steel control desks

## Introduction



The Spacial SDX range of control desks offers all the functions required to set up a control station that meets the industrial or infrastructural needs of applications in harsh environments or in the food and beverage sector. Easy to implement, compatible with dialogue components, guaranteeing the security and protection of control devices, these control desks, with their range of dimensions, meet the strictest needs of their users.

The association of a control desk with one or more consoles enables all combinations. Furthermore, the accessories are compatible with those of the Spacial range of steel control desks and floor-standing enclosures.

### Technical characteristics

- Floor-standing enclosure in 304L stainless-steel sheet, 1.5 mm thick.
- Protection rating: IP 55 according to IEC 60529.
- Resistance to external mechanical impacts: IK 10 according to IEC 62262.
- Locking by standard 3-mm double-bar lock (chrome-plated zamak).
- Hinges made entirely from stainless steel.
- With a height of 1000 mm and a depth of 500 mm, this range is available in 4 widths (600, 800, 1000 and 1200 mm).
- Full accessibility from the front.
- With removable rear panel.
- These control desks are equipped:
  - with a pneumatic opening stay on the opening of the desk lid, opening to 75°,
  - a single-piece cable-gland plate for cable entry,
  - 2 perforated vertical rails on the desk lid for quick fixing of cables and trunkings.
- They are equipped with 4 adjustment rails for adjusting the depth of the mounting plates with a pitch of 25 mm.
- Furthermore, it is possible to install two mounting plates back-to-back, allowing the installation of a large number of devices, while conserving full accessibility from the front and from the rear.
- The hinges allow the opening direction to change and the doors to be quickly removed, with an opening angle of 120°.
- At the top, these control desks are equipped with blanking covers for cable entry. This last point allows the installation of one or several modular consoles.

5



Specific



Dimensions (mm)			Reference	Number of front doors	316L stainless-steel plinth, height 100 mm (1)		316L stainless-steel plinth, height 200 mm (1)		Plain mounting plate (2)
Height	Width	Depth			Front + corner	Side	Front + corner	Side	
1000	600	500	NSYSDX6	1	NSYSPXF6200H	NSYSPXS5100H	NSYSPXF6200H	2 × NSYSPXS5100H	NSYPMP8560
1000	800	500	NSYSDX8	1	NSYSPXF8100H	NSYSPXS5100H	NSYSPXF8200H	2 × NSYSPXS5100H	NSYPMP8580
1000	1000	500	NSYSDX10	2	NSYSPXF10100H	NSYSPXS5100H	NSYSPXF10200H	2 × NSYSPXS5100H	NSYPMP85100
1000	1200	500	NSYSDX12	2	NSYSPXF12100H	NSYSPXS5100H	NSYSPXF12200H	2 × NSYSPXS5100H	NSYPMP85120

(1) See section on stainless-steel composition accessories.

(2) See other mounting plates in common accessories.

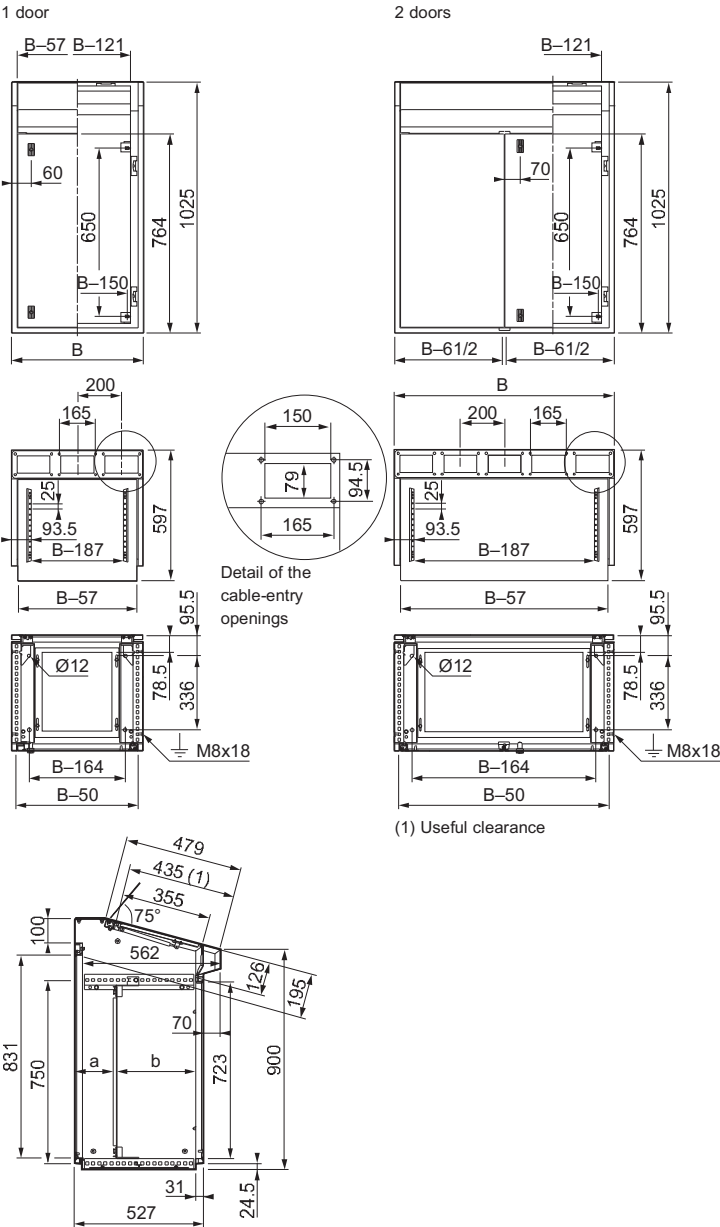
# Stainless-steel control desks

## Dimensions

### Monobloc control desks without console with removable rear panel

Cable-gland plate clearance dimensions (mm)	
Width	Depth
B-280	370

Adjustment of mounting-plate depth (mm)		
Dimensions	Min.	Max.
a	45	395
b	126	476





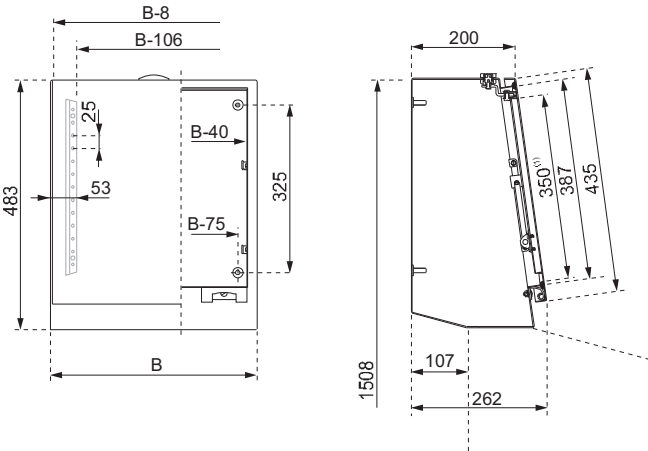
Modular consoles

The consoles are available with two widths of 400 and 600 mm and with two depths of 200 and 300 mm.

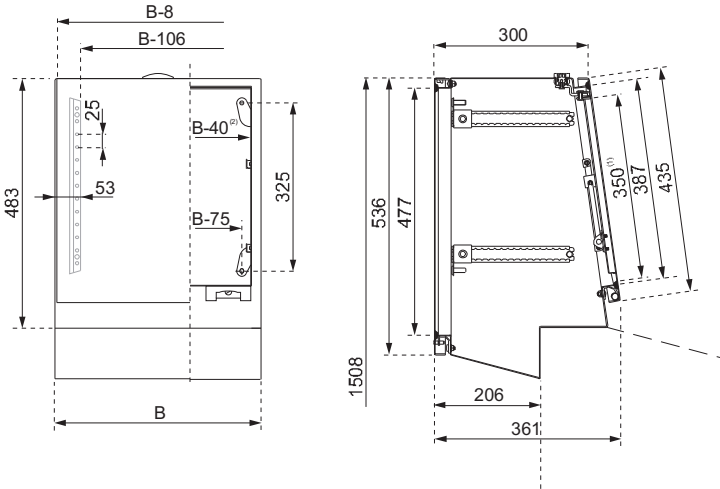
- They are equipped with:
  - A front door held by an opening stay, opening of 75°.
  - A screwed rear panel with step slides in the deepest version (300 mm).

External dimensions (mm)		Console reference
Width (B)	Depth	
400	200	NSYSDCX42
400	300	NSYSDCX43
600	200	NSYSDCX62
600	300	NSYSDCX63

Depth: 200 mm

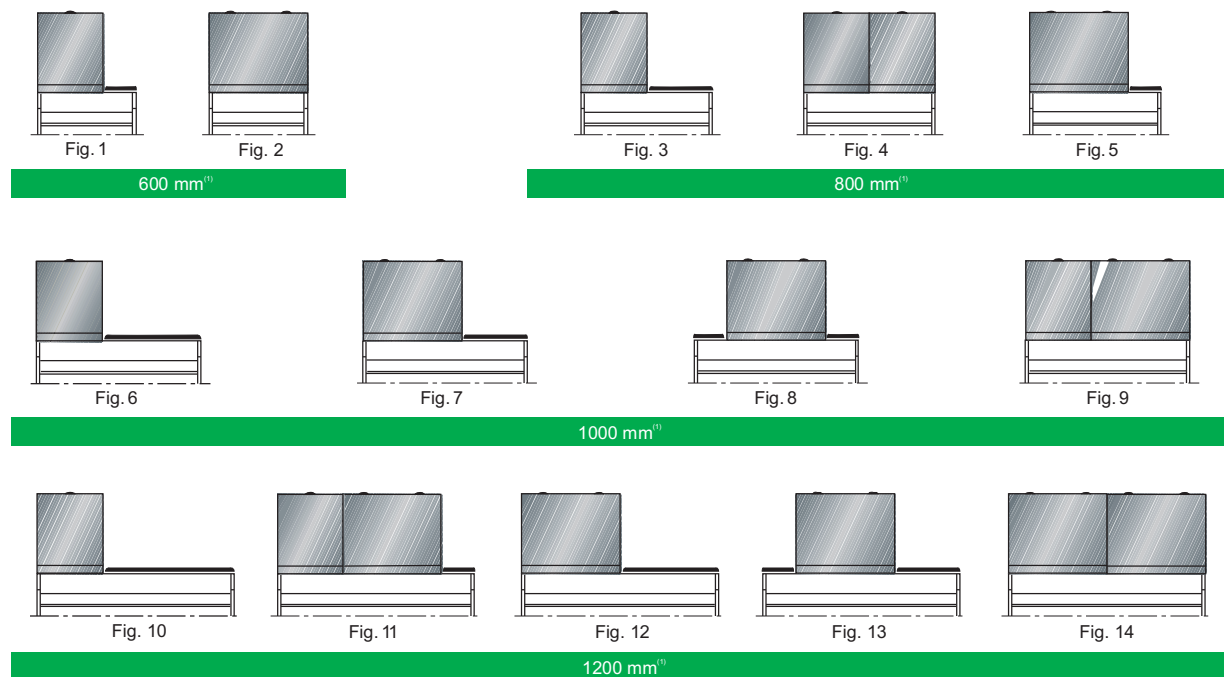


Depth: 300 mm



(1) Useful clearance.  
(2) Same dimensions for the rear panel.

## Mounting options



(1) Control desk width.

## Models, dimensions and references

Control desk width (mm)	Control desk reference	Width (mm)	Console reference		Blanking covers	Fig. no.
			Depth: 200 mm	Depth: 300 mm		
600	NSYSDX6	400	NSYSDCX42	NSYSDCX43	NSYRPX2	1
600	NSYSDX6	600	NSYSDCX62	NSYSDCX63	-	2
800	NSYSDX8	400	NSYSDCX42	NSYSDCX43	NSYRPX4	3
800	NSYSDX8	400	2 × NSYSDCX42	2 × NSYSDCX43	-	4
800	NSYSDX8	600	NSYSDCX62	NSYSDCX63	NSYRPX2	5
1000	NSYSDX10	400	NSYSDCX42	NSYSDCX43	NSYRPX6	6
1000	NSYSDX10	600	NSYSDCX62	NSYSDCX63	NSYRPX4	7
1000	NSYSDX10	600	NSYSDCX62	NSYSDCX63	2 × NSYRPX2	8
1000	NSYSDX10	400 + 600	NSYSDCX42 + NSYSDCX62	NSYSDCX43 + NSYSDCX63	-	9
1200	NSYSDX12	400	NSYSDCX42	NSYSDCX43	NSYRPX8	10
1200	NSYSDX12	400 + 600	NSYSDCX42 + NSYSDCX62	NSYSDCX43 + NSYSDCX63	NSYRPX2	11
1200	NSYSDX12	600	NSYSDCX62	NSYSDCX63	NSYRPX6	12
1200	NSYSDX12	600	NSYSDCX62	NSYSDCX63	NSYRPX2 + NSYRPX4	13
1200	NSYSDX12	600	2 × NSYSDCX62	2 × NSYSDCX63	-	14



Blanking covers

The blanking covers are designed to conceal the free space in the control desk when the width of the console or consoles is less than the width of the control desk (it is necessary previously to remove the top plate supplied as standard):

- 4 lengths: 200, 400, 600 and 800 mm.
- AISI 304L.
- Fixed by screws.

Width (mm)	Reference
200	NSYRPX2
400	NSYRPX4
600	NSYRPX6
800	NSYRPX8



Pneumatic opening stay

- Holds the desk lid in open position at an angle of 75°.
- Delivered with the fixings.

Nominal load per stay (N)	Stay reference
244	NSYPLS24
300	NSYPLS30

- The stays are delivered as standard with the control desks, according to the following table:

Max. load on lid (kg)	Control desk reference	Standard supply stay
13	NSYSDX6	NSYPLS24
13	NSYSDX8	NSYPLS24
17	NSYSDX10	NSYPLS30
15	NSYSDX12	NSYPLS30

## Selection tools

### > [www.schneider-electric.com](http://www.schneider-electric.com)

Our international site allows you to access all the Schneider Electric products in just two clicks with direct links to:

- A complete library of technical documents, catalogues, FAQs brochures, etc.
- Certificates.
- 2D & 3D drawings.
- Selection Guides from the e-catalogue.
- Product discovery sites.



You may also find illustrated overviews, news to which you can subscribe, a list of country contacts and more useful information.

### Our software suite

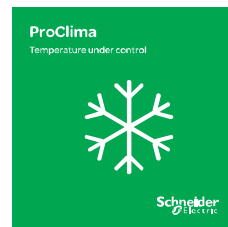
#### > [Spacial.pro](http://spacial.pro)

Spacial.pro allows you to make switchboard proposals based on the standard Spacial offer. A full project with several sets of switchboards is quoted in minutes, with automatic creation of the Bill of Material and 2D drawings for front/side views.



#### > [ProClima](http://proclima)

Calculate the right choice for your thermal management requirements, according to the environment and the electrical/electronic devices installed inside the enclosure.



#### > [Spacial.ref](http://spacial.ref) [Thalassa.ref](http://thalassa.ref)

These digital rules allow you to select the best components from the current extensive product range without the risk of any mistakes, since product and accessory selection take place automatically, saving you time and money.

